

BED SPECIFICATIONS

MATERIAL SPECIFICATIONS:

FRAME: 1 1/2" GAUGE OR HEAVIER C.R.E.W. STEEL TUBING, ELECTRIC ARC WELDED CONSTRUCTION, BAKED ON EMAMEL FINISH STANDARD, (4) COLORS TO CHOOSE FROM, RUBBER CORNERS.

HINGES: 1/8" THICK STEEL, ELECTRIC ARC WELDED.

PADBOARD: VINYL COVERING OVER 1/2" FOAM ON 1/2" A-C PLYWOOD

HEADBOARD: VINYL COVERING OVER 3/4" PARTICLE BOARD.

BASEPLATE: 3/4" PAINTED PLYWOOD.

SPRINGS: #5180 STEEL.

CONSTRUCTION SPECIFICATIONS:

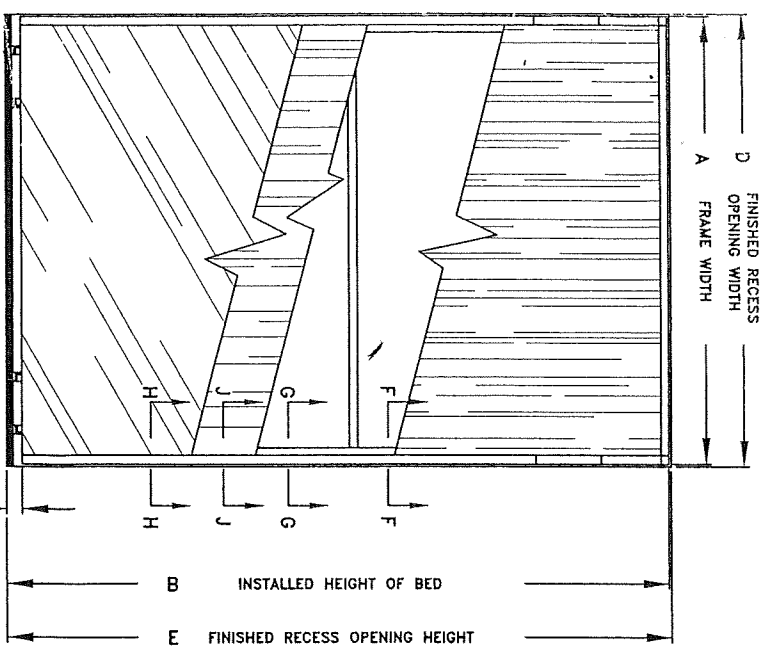
THE BED IS SHIPPED AS A 22" BED WHICH WILL ALLOW FOR PILLOW STORAGE WHEN BED IS FOLDED INTO RECESS. BED CAN BE CONVERTED BY CUSTOMER TO A 18-5/8" DEEP BED IF NARROWER SPACE IS REQUIRED. NO PILLOW STORAGE AT NARROWER SET-UP.

THE BOTTOM OF THE BED FRAME PROVIDES THE WALL CLOSURE. BED IS SHIPPED EITHER WITH NO FACE, 1/4" PLYWOOD SUB-PANEL, 3/8" PAINTABLE FACE OR PLASTIC FINISHED FACE. THE SUB-PANEL IS RECESSED AND TO THAT IS ATTACHED THE FINISHED BED FACE (1/4" MAX. THICKNESS) WHICH IS PROVIDED BY THE CUSTOMER.

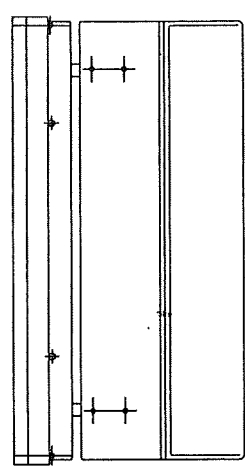
THE FRAME IS BOLTED TO THE HINGE ASSEMBLIES WHICH ARE SECURED TO THE BASEPLATE. THE BOXSPRING IS ATTACHED TO THE BED FRAME AND THE MATTRESS ATTACHES TO THE BOXSPRING. ALL ARE PERMANENTLY POSITIONED. ADJUSTMENT BOLTS ALLOW EAST ALIGNMENT IN RECESS OPENING AND COMPENSATE FOR THE WEIGHT DIFFERENCES IN BED FACES, BOXSPRINGS AND MATTRESSES.

THE BED IS SHIPPED WITH (6) FLOOR ANCHOR AND TORQUE BOLTS DESIGNED FOR HAND CONCRETE OR WOOD CONSTRUCTION. OTHER FLOORING MAY REQUIRE DIFFERENT FLOOR ANCHORS.

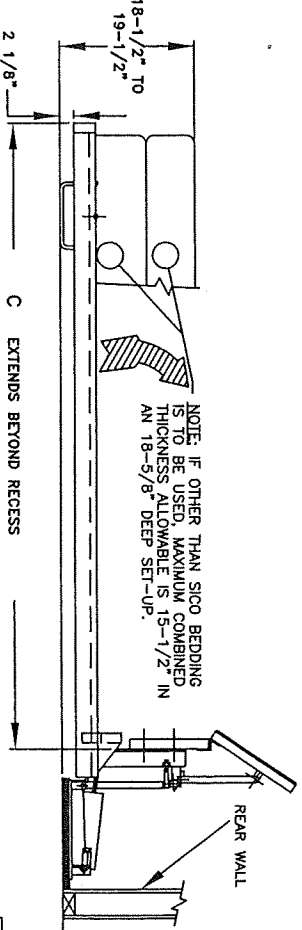
THE BED IS CARTONED AND SHIPPED WITH THE BED FRAME HANDLES, BASEPLATE, HEADBOARD, AND HEADBOARD TIEUP CARTRONS. THE ACCESSORY PACK IS CARTONED SEPARATELY AND INCLUDES SICO POWER PADS, HEADBOARD SUPPORTS, FLOOR ANCHORS AND ASSEMBLY INSTRUCTIONS.



BED RAISED



BED LOWERED



WALLED MODEL NUMBER FORMAT

BED SIZE	BED TYPE	FACE MATERIAL	FACE COLOR	FRAME COLOR	HEADBOARD VINYL COLOR	
ROOM MAKER 4187-TWIN REGULAR LENGTH 4192-TWIN EXTRA LONG 5887-DOUBLE REGULAR LENGTH 5892-DOUBLE EXTRA LONG 7992-KING.	EUROBED 4182-TWIN REGULAR LENGTH 5882-DOUBLE REGULAR LENGTH 6387-QUEEN REGULAR LENGTH	R-ROOM MAKER E-EUROBED	M-MELAMINE FACE PANEL R-READY TO PAINT (ROOM MAKER ONLY) P-PLYWOOD (ROOM MAKER ONLY) C-SPECIAL N-NO FACE PANEL	AL-ALUMINUM, WOODGRAIN FINISH WH-WHITE BL-BLACK SC-SPECIAL NC-NO COLOR	MB-BROWN, AL-ALUMINUM, BL-BLACK WH-WHITE CH-CHROME BR-BRASS, SC-SPECIAL COLOR	NAUGAHTIDE VINYL COLOR NUMBERS: MB-#US375 CHESTNUT AL-#US385 PAROCHMENT BL-#US393 BLACK WH-#US394 ADOBE WHITE

BED SIZE	A	B	C	D	E
CALIF. KING	74.50	92.25	86.88	75.00	92.63

NOTE:
FITS 72IN X 84IN MATTRESS.

REVISED 08-12-84
04-27-83
03-20-85
10-18-90
08-24-92
11-18-92

ROOM MAKER CALIF. KING BED SPEC.

7205 DOWNTOWN
SICO
FLOORING
INCORPORATED
5540 USA
PHOENIX, AZ 85044
PHONE: 612-941-1700
FAX: 612-941-6727

SCALE
DRAWN BY RAH
DATE 08/08/08
DRAWING NUMBER 71547S1

COPYRIGHT 19 SICO INCORPORATED
REVISION NUMBER